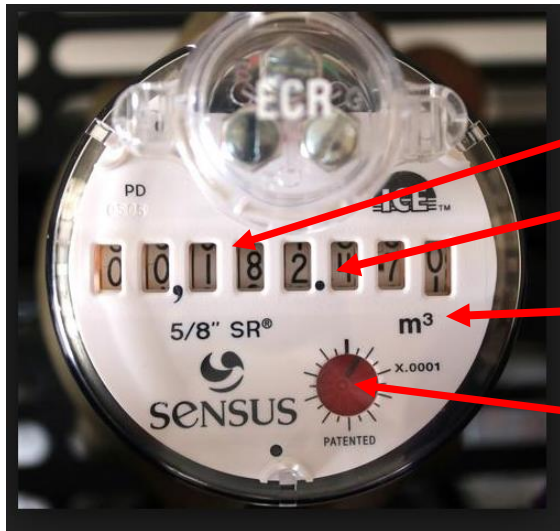


**COURTESY LEAK NOTICE:**

**Water Leaks:** Leaks can waste money and water. If you suspect a leak, use your water meter to find it.

**Common culprits are:** Toilet flapper valve, dripping tap, feed to a washing machine or a softener with a pin hole leak. Many of these are silent offenders. Be proactive and check for leaks a few times a year.

Check your meter face for the low flow indicator on the front. If there is no water being used in the house, but the dial is turning, that could mean water is being lost through a leak. Utilize the water shut off valve on each appliance to find the leak.



Display of Water Consumption like  
Odometer in a car

Decimal Point

Water is measure in Cubic Meters  
1 Cubic Meter =1,000 litre or 220 gallons

Low Flow indicator will spin if water is  
going through the meter

**New water meters** are equipped with a digital screen. When water is flowing through the water meter a positive (+) sign will display on the digital screen. If this occurs when no water is being used in the home that could mean water is being lost through a leak. Utilize the water shut off valve on each appliance to find the leak.



Leak Indicator –  
IPerl Meter

## Take the leaky toilet test

To find out if your toilet is wasting water, remove the tank lid of your toilet and follow these simple steps:



1. **Drop** - Put several drops of food colouring into the toilet tank and wait 10 minutes.
2. **Peek** - Look in the bowl. If the water changes colour, you've got a leak.
3. **Repair** - If the water changes, your toilet is leaking and needs repair
4. **Save** - Congratulations! By repairing just one toilet, you could save \$100!

### Why check for leaks?

Most toilet leaks are silent and a leaking toilet can waste 2,500 liters a month - enough to fill your bathtub 28 times! You pay for all this wasted water. Checking for toilet leaks twice a year will only take you a few minutes and could equal big savings on your water bill.